

The Start, The Finish & Officials Roles



Dave Cairns
Level 4 Endurance Official
m. 07899 891298

THE START

BELIEVE, BELONG, ACHIEVE TOGETHER

scottishathletics



The Start

What Determines Start Area Requirements?

- **Endurance discipline:** Road, cross-country, hill/fell, trail, ultra.
- **Start Area Terrain and Usage:** Road, parkland, playing field, arable or pastoral farmland (livestock), forestry, open hillside.
- **Type of Race:** Point to point, lapped course, relay.
- **Facilities:** Toilets, changing, baggage drop-off, marketing / branding, catering, first aid, charities, entertainment.
- **Competitor numbers and any disabilities:**
 - **Ambulant disabled athletes:** Physical disabilities, hearing impairment, sight impairment, neurodivergent.
 - **Mobility aided athletes:** Wheelchair, handcycle, frame runners.
- **Start Timing:** Manual or transponder (chip) timing.

The Start

What are the prime considerations?

- The safety of everyone in attendance at the event.
- A fair and safe race start.

How are these addressed?

- **Full Risk Assessment of:**
 - The entire start area and facilities
 - The race start (race start set-up and gantry, etc.)
 - First Aid and Outside Contractors (marquees, catering, etc.) should provide their own Risk Assessment
- Direction/warning signage and crowd barriers.
- Start Area Stewards and Officials.
- Segregation of spectators from officials and competitors.

The Start

What determines Event Start Steward numbers?

- **Scale of the Event:** Anticipated competitor/spectator numbers.
- **What needs stewarding:**
 - Car Parking
 - Start Area access / egress
 - Spectators and Competitors
 - Competitors warm-up area



.....and Toilets

What determines Race Start Officials numbers?

- **Start Timing:** Manual or transponder (chip) timing.
- **Race Start:**
 - Single mass start
 - Start Pens (team competition)
 - Anticipated finishing time banded “Wave Starts”
 - Start arrangements for disabled athletes

The Start

How do we achieve a fair and safe start?

- Locate start in an area closed to traffic.
- Start should be as wide as possible avoiding downhill starts and street furniture, run straight for as far as possible and avoid early tight bends.
- The race start area should be well marked and fully controlled to restrict access and exclude spectators, using barriers, cones, rope, tape, etc.
- Ideally everyone would start on the same line, but the problem of slower runners impeding faster runners should be avoided.
- Ensure that the correct start line is used, a 'dummy' assembly line set back from the start line helps.
- Large races might adopt 'Wave Start' ability 'Zones'.

The Start

How do we achieve a fair and safe start?



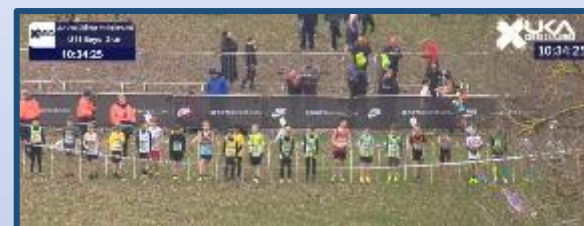
Ultra Trail / Hill



Relay Changeover



Chip Timed



Start Pens



As wide as possible



Dummy Assembly Line



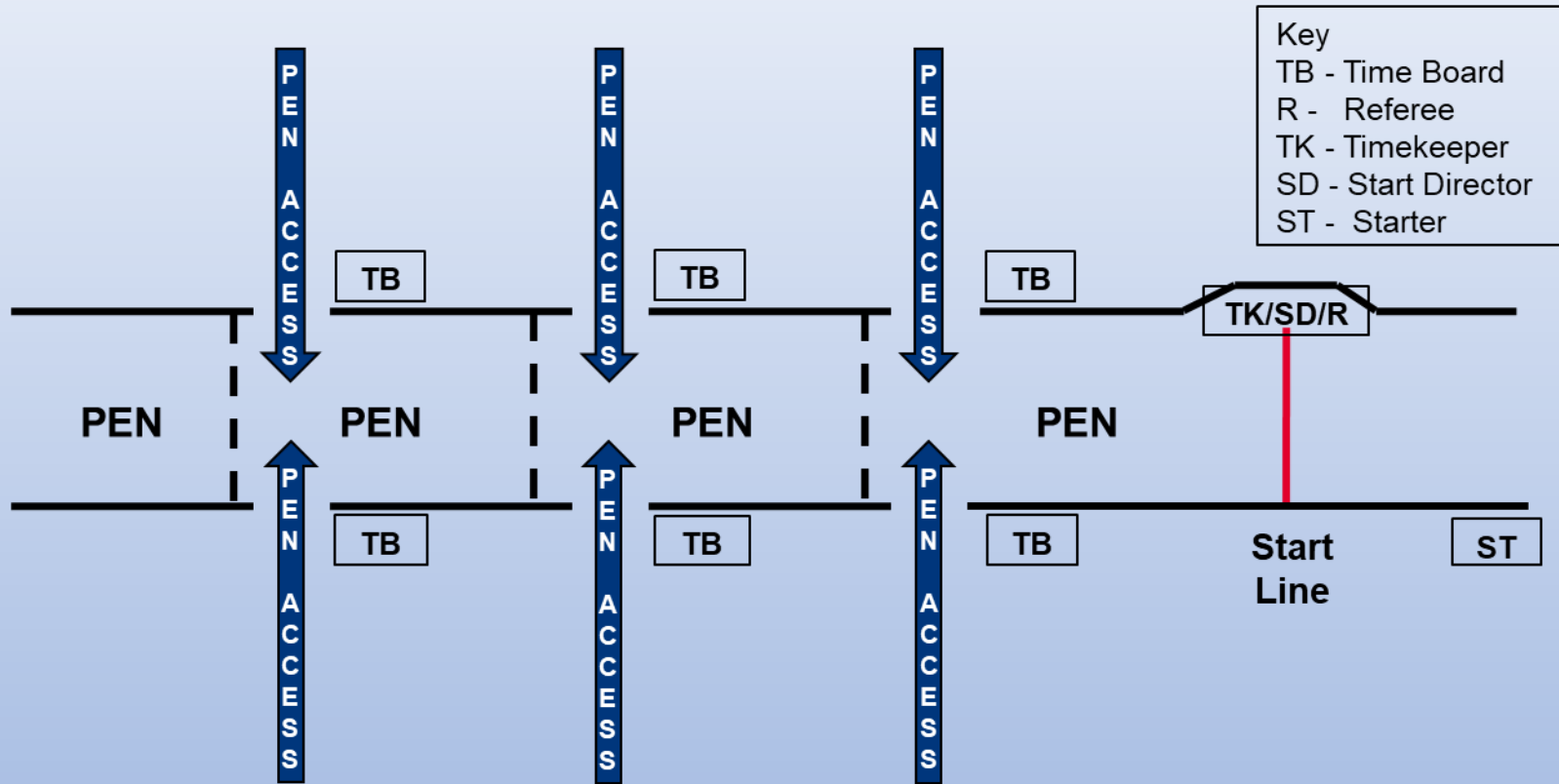
Elite Marathon



Disability

The Start

How do we achieve a fair and safe start?



Race Wave Start

The Start

Start Area Management Officials

Irrespective of event scale, the following officials are required to oversee and manage the race start area:

- **Race Director***: Overall Responsibility for the Event.
- **Start Director***: Responsible for the safe management of all activities concerning the start of the race.

* For smaller local/club races the Race, Start and Finish Director roles may be combined.

- **Start Area Stewards**: Providing general spectator and competitor guidance around the Start Area village.
- **Race Start Stewards**: Guide competitors to their appropriate race start(s) and exclude spectators from the race start area.

The Start

Race Start Officials

The following Technical Officials are required at the start:

- **Referee:** Liaise with Starter and Starters' Assistant(s) to oversee fair and safe race start, applying UKA and local competition rules where appropriate.
- **Starter:** Overall responsibility for race start; check safe to start race with Race Director/Referee and Timekeepers are ready.
- **Starters' Assistant(s):** Check club vests, bib numbers, chips and assist Starter in assembling competitors.
- **Timekeeper:** Liaise with Starter, start stopwatch(s) on start signal, if appropriate, cross-check with Chip Timing Chief.
- **Chip Timing:** Liaise with Starter, start chip timing system on start signal and cross-check with Chief Timekeeper.

THE FINISH

BELIEVE, BELONG, ACHIEVE TOGETHER

scottishathletics



The Finish

What Determines Finish Area Requirements?

- **Endurance discipline:** Road, cross-country, hill/fell, trail, ultra.
- **Finish Area Terrain and Usage:** Road, parkland, playing field, arable or pastoral farmland (livestock), athletic arena, forestry.
- **Type of Race:** Point to point, lapped course, relay.
- **Facilities:** Refreshments, toilets, baggage collection, changing, marketing / branding, catering, first aid, family reunion, charities, entertainment.
- Competitor numbers and disabled athlete finish arrangements.
- **Finish Timing:** Manual or transponder (chip) timing.
 - **Manual timed Finish:** Finish funnels
 - **Transponder timed Finish:** Chip timing “mats” / recording device with exclusion zone, manual back-up and video

The Finish

What are the prime considerations?

- The safety of everyone in attendance at the event.
- A fair and safe race finish.

How are these addressed?

- **Full Risk Assessment of:**
 - The entire finish area and facilities
 - The race finish (race finish set-up, gantry, etc.)
 - First Aid and Outside Contractors (marquees, catering, etc.) should provide their own Risk Assessment
- Direction/warning signage and crowd barriers.
- Finish Area Stewards and Officials.
- Segregation of spectators from officials and competitors.

The Finish

What determines Event Finish Steward numbers?

- **Scale of the Event:** Anticipated competitor/spectator numbers.
- **What needs stewarding:**
 - Car Parking
 - Finish Area access / egress
 - Spectators and Competitors
 - Toilets
 - Refreshments & Race Memento collection

What determines Race Finish Officials numbers?

- **Race Finish:**
 - **Timing:** Manual or transponder (chip) timing
 - Finish arrangements for disabled athletes

The Finish

How do we achieve a fair and safe finish?

- The finish area should be traffic free, with as long a run in as practical, avoiding street furniture and a downhill finish, and sufficient room beyond the finish line for all ancillary services.
- Finish area should be well marked and fully controlled to restrict access and exclude spectators to the whole area using barriers, cones, rope, tape, etc.
- Plan finish line width and set-up to accommodate anticipated maximum 'peak' density of finishers.
- Clearly delineate and identify the finish line.
- Ensure the competitor's finishing order and allocated time are correctly recorded and entered in the results.
- Avoid finish line trip hazards (uneven ground, monitor chip timing mat 'creep', etc.)

The Finish

How do we achieve a fair and safe finish?



Two-Funnel Finish
Manual Timing



'Webscorer' Timing



Road Ultra Start/
Finish/Lapping



Ultra Trail / Hill /
Adventure
SPORTident
'Dibber' Timing



London Marathon

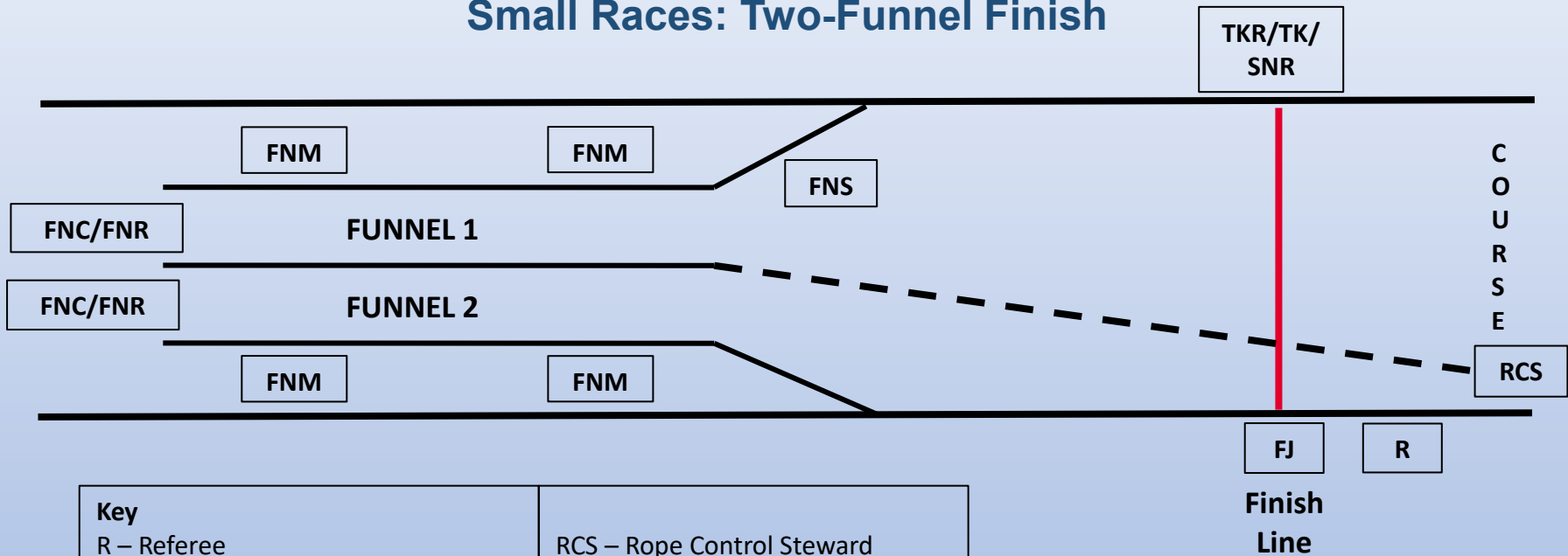


Chip Timing

The Finish

How do we achieve a fair and safe Finish?

Small Races: Two-Funnel Finish

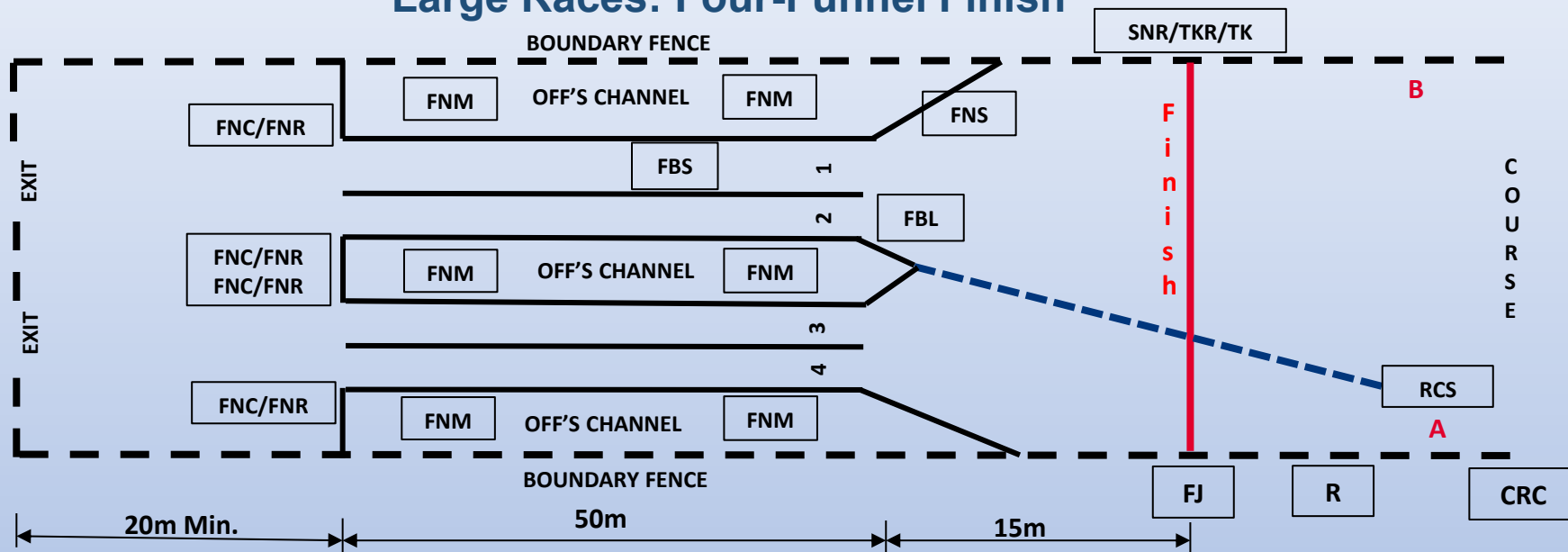


Key	
R – Referee	RCS – Rope Control Steward
FJ – Finish Judge	FNS – Funnel Steward
TK – Timekeeper	FNM – Funnel Marshal
TKR – Timekeepers' Recorder	FNC – Finish Number Caller
SNR – Spot Number Recorder	FNR – Finish Number Recorder

The Finish

How do we achieve a fair and safe Finish?

Large Races: Four-Funnel Finish



Key

R – Referee
 FJ – Finish Judge
 TK – Timekeeper
 TKR – Timekeepers' Recorder
 SNR – Spot Number Recorder
 CRC – Chief Rope Controller

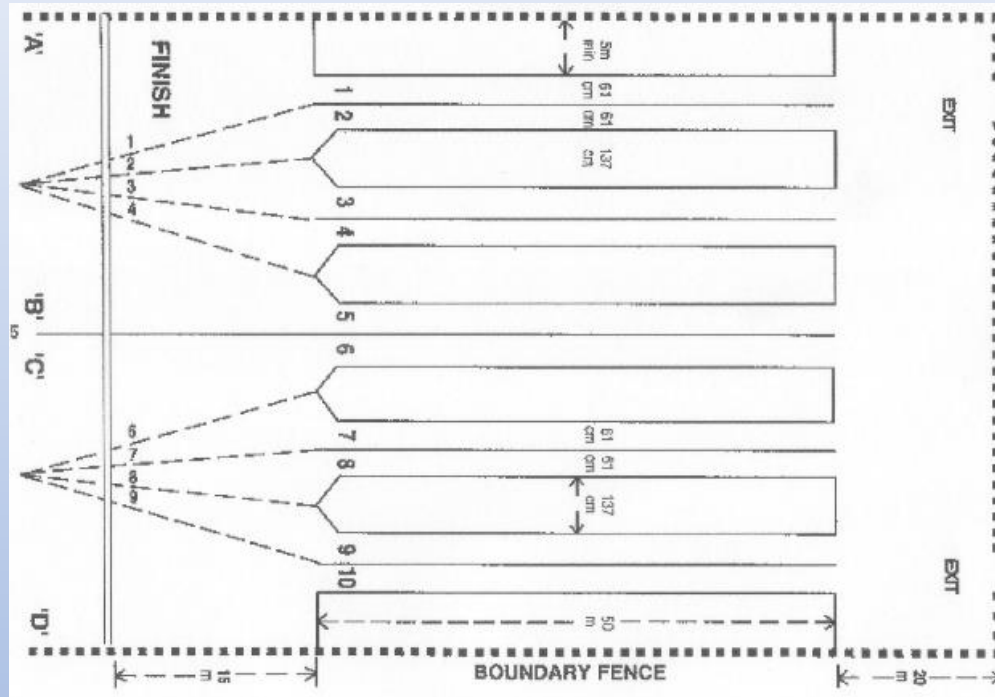
RCS – Rope Control Steward
 FBL – Funnel Blocker
 FBS – Funnel Batch Separator
 FNS – Funnel Steward
 FNM – Funnel Marshal
 FNC – Finish Number Caller
 FNR – Finish Number Recorder

Officials' Channel widths
 - 3m Minimum (Outer)
 - 137cm (Intermediate)
 Funnel widths
 - 61cm

The Finish

How do we achieve a fair and safe start?

Large Races: Multiple-Funnel Finish



With transponder (chip) timing, these complex arrangements are generally no longer necessary.

The Finish

Finish Area Management Officials

Irrespective of event scale, the following officials are required to oversee and manage the race start area:

- **Race Director***: Overall Responsibility for the Event
- **Finish Director***: Responsible for the safe management of all activities concerning the Finish of the race

* For smaller local/club races the Race, Start and Finish Director roles may be combined.

- **Finish Area Stewards**: Providing general spectator and competitor guidance
- **Race Finish Stewards**: Distributing water to finishers and memento/goody bags, ushering competitors through the finish area and exclude spectators

The Finish

Race Finish Officials (Transponder Timed)

The following Technical Officials are required at the Finish of a transponder (chip) timed race:

- **Referee:** Liaise with Finish Officials, to oversee fair and safe race finish, applying UKA and local competition rules where appropriate and sign-off on results.
- **Chip Timing Team:** Process finish results and liaise with Referee / manual back-up on results sign-off.
- **Line Judge:** Adjudicate on tight finishing positions.
- **Back-up Video Operator:** Operate and monitor video.
- **Manual back-up Time Recording:** Record as many finish times as possible, plus spot times.
- **Manual back-up Place Recording:** Record as many finishers as possible.

The Finish

Race Finish Officials (Manual Timed)

The following Technical Officials are required at the Finish of a manually timed race (with finish funnels):

- **Referee:** Liaise with Finish Officials, to oversee fair and safe race finish, applying UKA and local competition rules where appropriate and sign-off on results.
- **Line Judge:** Adjudicate on close finishing positions and liaise with Funnel Steward.
- **Timekeeper(s):** On finish line and calls finishers times and 'numbers at'.
- **Timekeepers' Recorder(s):** Records all finishers times.
- **Spot Number Recorder:** Records Spot 'Bib numbers' against the time for that athlete.

The Finish

Race Finish Officials (Manual Timed)

.... and The Finish Funnels:

- **Funnel Steward:** Ensure competitors enter finish funnel(s) in the correct order (indicated by Line Judge) and monitors Funnel Marshals.
 - **Funnel Marshals:** Ensure competitors remain in the correct order throughout the finish funnel and encourages finishers to keep moving through the funnel.
 - **Chief Rope Controller*:** Monitors funnel filling, assesses gaps between finishers and coordinates funnel changes.
 - **Rope Control Steward:** Holds a tape or strong rope attached to the end of funnel divider and directs leading runners into open funnel whilst closing remaining funnel(s).
- * Only generally required for larger races with 3 or more funnels.

The Finish

Race Finish Officials (Manual Timed)

- **Disc Controller***: Funnel system will have a set of numbered Discs assigned to it, located on a board at the head of the central Officials Channel, under the control of a Disc Controller, who gives the first Disc to the open funnel Batch Separator.
 - **Batch Separator***: Takes Disc and enters open funnel to await arrival of the first runners, leads them up the funnel until reaching the Finish Recorders and tells Recorder the current Funnel Number as shown on the Disc and returns to the head of the funnel via officials' channel ready to re-enter the system.
 - **Funnel Blocker***: Closes open funnel to approaching runners after funnel change is called, approaching runners directed to the next open Funnel by the Rope Control Steward(s).
- * Only generally required for larger races with 3 or more funnels.

The Finish

Race Finish Officials (Manual Timed)

.... and Place Recording

- **Finish Number Recorder:** Start a new Funnel Recording Sheet, with the Disc number written at the top and records Finishers bib numbers in order as called by the Finish Number Caller.

- **Finish Number Caller:** Calls Finishers bib numbers in order

The process outlined above is repeated in sequence.

If the Rope Control Steward can change position before the runners entering the funnels 'backup' to the finish line, a free flow over the finish line can be maintained for the duration of the race.

Large Races with multiple-funnel finishes (3 or more) requires training and practice to hone the funnel filling operation.

UKA Rules

Relating to the start, finish and Officials



UKA Rules

- Competition Rules:
 - Part II – Competition Officials: CR3 – 19
- Technical Rules:
 - TR16: The Start
 - TR16 S1UKA Supplement: Hearing impaired plus vision and hearing-impaired athletes starting
 - TR18: The Finish
 - TR 19: Timing and Photo Finish
 - 19.04 – 19.12: Hand Timing
 - 19.24 & 19.25: Transponder Timing

UKA Rules

- Part VII – Road Races
 - TR55.6: Start
 - TR55 S2 UKA Supplement: Refreshments
 - TR55 S7 UKA Supplement: Wheelchairs and Buggies
- Part VIII – Cross-Country, Mountain and Trail Races
 - TR56.6: Start
 - TR56 S2 UKA Supplement: Start
Green text WA Interpretation: The Finish
 - TR57.2: Start
 - TR57.7: Start
- UKA General Rules:
 - G9 Ultra Distance Road and Track Events
- Appendix 4 Endurance Running:
 - Risk Assessment Guidance
 - Governance and Competition Promotion Responsibilities

The Start, The Finish and Officials Roles

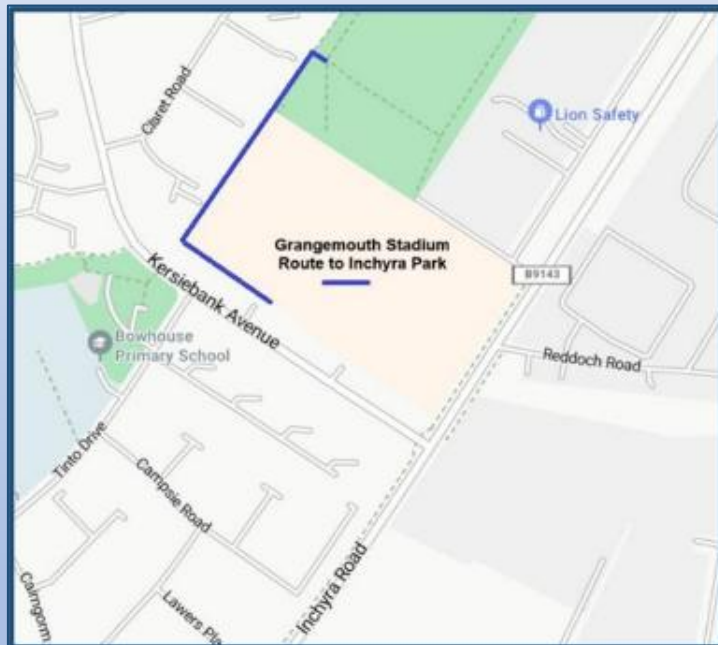
Any Questions?



The Start, The Finish and Officials Roles

That's the theory!

After lunch we'll go outside to Inchyra Park and put it into practice.....



Route from Stadium to Inchyra Park



Path from Stadium



Inchyra Park

The Start, The Finish and Officials Roles

Any Questions?



The Start, The Finish and Officials Roles

Many thanks for attending

Dave Cairns
Level 4 Endurance Official
m. 07899 891298